



**GW*i***  
George Wilson Industries

**metrix**  
GRUPA APATOR

Industrial & Commercial  
Smart Gas Meters

## Key Features

- High tech, state of the art design with high quality components
- Proven and reliable diaphragm gas meter with high accuracy multipoint calibration throughout the flow range
- For use with fuel gases of the 1st, 2nd & 3rd families according to EN 437:1993
- MID approval in accordance with EN 1359
- Volume conversion to base condition in accordance with EN 12405
- ATEX (EN 60079) approval (Zone 2 3G Ex ic IIA T3 Gc)
- IP65 ingress protection rating (IEC 60529)
- Optical port located on front of index (IEC 1107 and IEC 62056-21 compliant)
- Low power, solid state GWi Hall Effect sensor (patent pending)
- Calculated 15 year battery life (dependent on profile)
- MBus 868MHz and ZigBee 2.4GHz communications modules available
- FOTA upgradeable (Firmware Over The Air upgradeable)
- Real time clock accuracy:  $\pm 0.5s/day$

## Technical Data

		G10 (U16)	G16 (U25)	G25 (U40)
Cyclic Volume (dm <sup>3</sup> )		5.6		11.2
Flow Range (m <sup>3</sup> /h)	Qmax	16	25	40
	Qmin	0.10	0.16	0.25
	Qnorm	10	16	25
Max working pressure (mbar)		500		
Starting flow rate (dm <sup>3</sup> /h)	Qstart	13.0		20
Connection Centres		12" (300mm)		335mm
		-		16" (400mm)*
Gas Connections (ISO228-1)		G2"		G2½"
Weight (kg)		6.7		12.4
Dimensions (H x W x D) (mm)		345 x 370 x 218		361 x 456 x 316
		-		466 x 476 x 316*
Max Index Reading (m <sup>3</sup> )		999999.999		
Operating Temperature (°C)		-25 to +55		
Storage Temperature (°C)		-25 to +60		
*with optional eccentric adapters				

## Additional Features

- Single removable front cover with separate battery and communication compartments
- Five layer security system comprising both physical and electronic tamper detection of compartment cover removal, MID seal removal, index removal, external magnetic fields
- 2 button user interface
- Universal comms module interface allowing interchangeability & in-service replacement
- Primary Battery: 3.6V Lithium Thionyl-Chloride (can be replaced in-service)
- HLC Backup Battery: 30 days capacity to support critical functions such as measurement logging and clock maintenance during battery change
- Wide viewing angle negative polarity LCD display with backlight illumination
- Powdercoated casework (RAL 7035 - light grey) with stainless steel band
- Measurements displayed to 1 litre resolution (0.001 m<sup>3</sup>) (configurable)
- Resistant to high ambient temperatures (650 °C) as per EN 1359



### Smart features

- Approved firmware platforms for use in Europe & the United Kingdom
- Register and calculation of the following: Volume at measuring condition [m<sup>3</sup>], Corrected volume [m<sup>3</sup>], Volume at base condition [m<sup>3</sup>], Energy [kWh], Instantaneous flow rate [m<sup>3</sup>/h], Maximum demand (peak flow)
- 2 channel profile recorder with independently configurable data capture
  - Configurable intervals & capacity
  - Channel 1 designed for general energy measurement
  - Channel 2 designed for billing profile
- Configurable time-of-use tariffs
- Optional prepayment (PPMID) feature
- Data logger with five independent FIFO buffers (up to 50 events), including: General, Fault Conditions/Tampers, Security, Communications

### Communications Modules

- ZigBee 2.4 Ghz SMETS 2
- Wireless MBUS 868 Mhz OMS (Mode 5 encryption)
- Wireless MBUS 868 Mhz SMR 5.0 (Mode 9 encryption)



#### G10/G16 Meter

Utilises a 5.6L measuring unit, common base meter and index

**G25 Meter**  
Utilises two 5.6L measuring units and a common, smart index



## Extended product range



Standard Installation

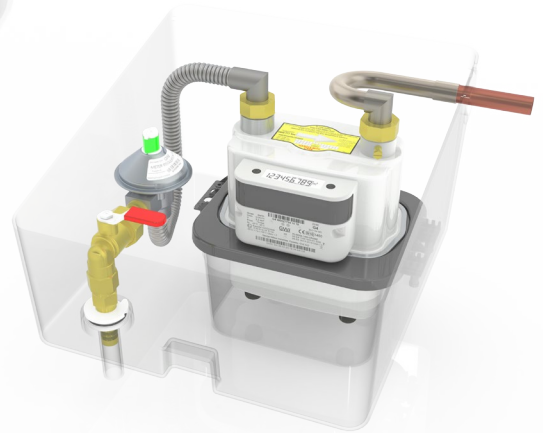
G4 Smart Meter with

- Front Viewing Index (FVI) and
- GWi SR100 Regulator Kit

Semi-Concealed Installation

G4 Smart Meter with

- Top Viewing Index (TVI) and
- GWi SR100 SC Regulator Kit (including all hoses/outlet pipe)



# GW*i*

George Wilson Industries

George Wilson Industries Limited

Aldermans Green Industrial Estate

Barlow Road

Coventry

CV2 2LD

United Kingdom

T: +44 (0) 2476 709 050

F: +44 (0) 2476 647 970

E: smart@gwi-ltd.co.uk

W: www.gwi-ltd.co.uk

# metrix

GRUPA APATOR

Apator Metrix S.A.

Ul. Grunwaldzka 14

PL 83-110

Tczew

Poland

T: +48 (58) 530 92 00

F: +48 (58) 530 93 00

E: metrix@apator.com

W: www.apator.com



ISO  
9001  
Quality  
Management

FS 00657

ISO  
14001  
Environmental  
Management

EMS 86012

ISO/IEC  
27001  
Information Security  
Management

IS588650

ISO  
45001  
Occupational  
Health and Safety  
Management

OHS 638127

ISO  
22301  
Business  
Continuity  
Management

BCMS 662704