



GW*i*
George Wilson Industries

metrix
GRUPA APATOR

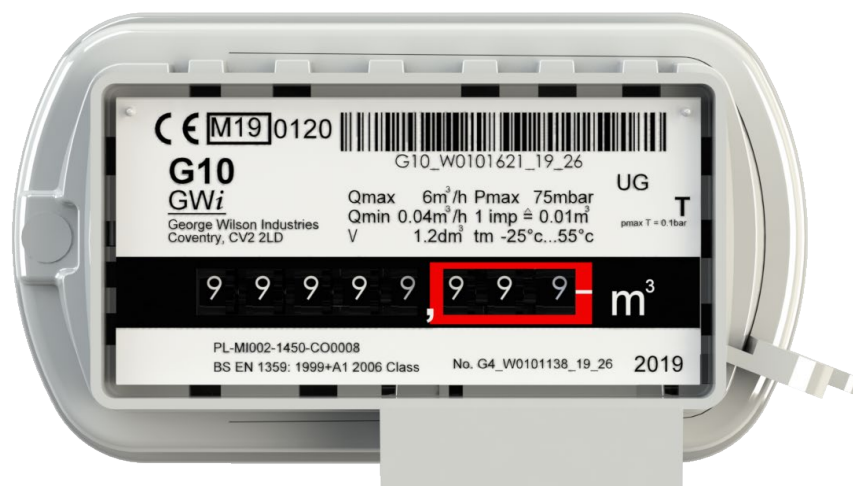
Industrial & Commercial
Mechanical Gas Meters

Key Features

- Proven, reliable diaphragm gas meter with high quality components
- High accuracy calibration throughout the flow range
- For use with fuel gases of the 1st, 2nd & 3rd families according to EN 437:1993
- MID approval in accordance with EN 1359
- Supplied pulse capable as standard. Pulse transmitter can be added at any time (1 imp = 0.01 m³)
- Built-in tamper protection: Index is supplied with external lead seal and locking pins within the index prevent disassembly
- Powdercoated casework (RAL 7035 - light grey) with stainless steel band
- Resistant to high ambient temperatures (650 °C) as per EN 1359

Technical Data

Meter Variant		G10	G16	G25
Cyclic Volume (dm ³)		5.6		11.2
Flow Range (m ³ /h)	Qmax	16	25	40
	Qmin	0.10	0.16	0.25
	Qnorm	10	16	25
Max working pressure (mbar)		500		
Starting flow rate (dm ³ /h)	Qstart	13		20
Connection Centres		300mm (12")		335mm
Gas Connections (BS 746)		2"		2"
Weight (kg)		~ 6.5 kg		~12.5 kg
Dimensions (H x W x D) (mm)		345x 393 x 218		361 x 456 x 316
Max Index Reading (m ³)		99999.999		
Operating Temperature (°C)		-25 to +55		
Storage Temperature (°C)		-25 to +60		
*up to 500mbar on request				



Extended product range



Standard Installation

G4 Smart Meter with

- Front Viewing Index (FVI) and
- GWi SR100 Regulator Kit

I&C Smart meters

- G10, G16 and G25 meters with Qmax 16, 25 & 40 m³/h
- Smart electronic index (approved firmware platforms)
- W-MBus 868 MHz comms module
- Calculated 15 year battery life



George Wilson Industries Limited
Aldermans Green Industrial Estate
Barlow Road
Coventry
CV2 2LD
United Kingdom
T: +44 (0) 2476 709 050
F: +44 (0) 2476 647 970
E: smart@gwi-ltd.co.uk
W: www.gwi-ltd.co.uk



Apator Metrix S.A.
Ul. Grunwaldzka 14
PL 83-110
Tczew
Poland
T: +48 (58) 530 92 00
F: +48 (58) 530 93 00
E: metrix@apator.com
W: www.apator.com

