

For the installer:

Registration with the communications hub

1. Press button A to enter the main menu
2. Navigate to the 01 - Install window
3. Press and hold button B to initiate commissioning

The meter will display the remaining time in minutes and the commissioning progress bar:



60 minutes are allocated to allow connections to be made and to fully commission the meter. There are 4 stages to the process, represented by the four progress symbols after the colon. In the example the 1st and 2nd stages have been completed.

The first stage is the communications module successfully paired with hub (8.11), with the three further stages as per GBCS. Once successfully commissioned the meter will automatically quit service mode. The process can be prolonged for an additional 60 minutes by re-selecting the 01 - Install window and then press and hold button B.

The installer can navigate to the 19 - Quit Service Mode window to exit installation/service mode. The meter will continue the commissioning process in the background until it is complete, however this will disable all service accessible windows.

After quitting service mode / successful commissioning, access to the service menu is unobtainable unless the security seals and compartment cover are removed.

Communications Module Triggering

If the communications module needs waking up, navigate to this window (03) in the main menu and activate it (press and hold button B). If the ZigBee is already in an awake state the action will be ignored.

Access Levels

The index has 3 access levels which enable different windows to authorised users (see list of windows in main booklet):

- (A) Always - Screen always visible
- (U) User - Screen visible after correct PIN entered (or PIN disabled)
- (S) Service - Screen visible in service access mode



Declaration of Conformity

This gas meter is approved to the Gas Act 1986: Section (17): Gas Meters and Regulations 1983

It is compliant with the requirements of

- BS EN 1359: 1999/A1 (2006) and BS EN 16314:2013
- MID Directive (2004/22/EC)
- EMC Emissions EN 16314:2013* Section 4.12 & ETSI EN 301489-17 v3.1.1 (ETSI EN 301 489-1 v2.1.1)
- EMC Immunity EN 16314:2013* Section 4.12 & ETSI EN 301 489-17 v3.1.1 (ETSI EN 301 489-1 v2.1.1)
- Directive for Potentially Explosive Atmospheres Directive (ATEX) 2014/34/EU
- Council Recommendation (1999/519/EC) of 12 July 1999 on the limitation of exposure of the general public to electromagnetic fields (0 Hz to 300 GHz)

Gas meters must be installed by a Gas Safe registered installer in accordance with BS 6400.

All warning & safety labels must remain attached to the meter and be adhered to at all times.

The meter secure perimeter must be inspected for any tamper attempts at the end of the installation and during any subsequent meter visit.

All enquiries regarding installation, servicing and maintenance of this gas meter must be directed to your energy provider.



George Wilson Industries

George Wilson Industries Limited
Aldermans Green Industrial Estate
Barlow Road
Coventry
CV2 2LD
United Kingdom

www.gwi-ltd.co.uk



ISO 22301
ISMS Classification: Public
Version 1.0 04.MAY.2020
ENG09040

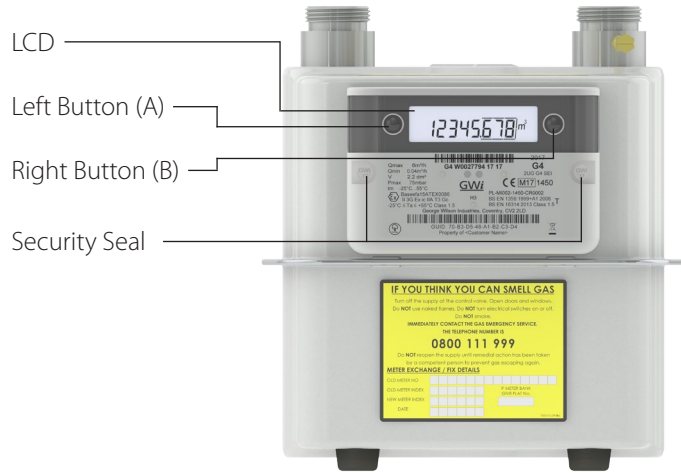
George Wilson Industries

G4 SEI V2
User Reference Guide

Introduction

Below are the key features of your new smart gas meter. They will be referred to throughout this guide.

Gas Meter



Liquid Crystal Display (LCD)

The LCD gives access to a wealth of information available within the index as well as important icons which show you the status of your gas meter.



The LCD displays meter data using its 8 digit display. Each window has an index number in the bottom left corner, and is accessed through a combination of buttons A and B.

LCD User Interface Symbol Descriptions

	Valve open		Battery status icons Not present: battery life sufficient First icon: 10% battery remaining Second icon (flashes): battery empty
	Time and date icons (used during manual / auto scroll sequence)		RF Communication active
	Error warning		Tamper flag icons 1st flag: general tamper activated 2nd flag: MID tamper activated 3rd flag: valve failure

General Function

Pressing either button activates the LCD and goes directly to the **automatic scroll sequence**. This will remain active for 3 minutes before the index returns to sleep mode. It shows:

- 00 Any user messages from your energy supplier
- 01 Corrected volume total (**meter reading**)
- 02 Local time
- 03 Device ID (serial number)

From here, press and hold button A to access the **main menu**

Or, press button B twice in quick succession to access the **manual scroll sequence**. All segments of the LCD will light to confirm this was successful.

Important windows (Quick Reference)

Top-up code entry

To enter a top-up code, navigate to the main menu then window 08 - Top-up Code. Select the menu item by pressing and holding button B.

Enter your top-up code by quick-pressing button B to increment each digit, then accept by pressing and holding button B to move onto the next digit. When all 20 digits are entered, press and hold button B to submit the code. Pressing button A moves to the previous digit, pressing and holding button A exits the top-up code entry window.

Setting the PIN

Pre-selected windows with user sensitive information can be hidden from the manual scroll sequence in the gas meter.

PIN protection is disabled by default but can be activated by navigating to window 04 - PIN access in the main menu. Enter your PIN in the same way a top-up code is entered. This will then need to be repeated to confirm the PIN is correct.

Do not reveal your PIN to anyone.

To reveal the hidden windows, enter your PIN in window 04 in the main menu. A PIN entry will stay valid until the index returns to sleep mode.

Note: Once activated, PIN control can only be reset by your energy supplier.

Main Menu Options

Select a main menu item by pressing and holding button B. To return to the main menu press and hold button A. Please note, this will cancel any entry or active functions. The display will remain on the selected window for 2 minutes before returning to the automatic scroll sequence.

01 (S)	Install	10 (S)	Security Log
02 (S)	Uninstall	11 (S)	Billing
03 (A)	ZigBee Trig	12 (S)	Change Resolution
04 (A)	PIN Access	13 (S)	Test Valve
05 (U)	Valve Menu	14 (S)	Reset Battery Life
06 (U)	Clear Messages	15 (S)	Battery Usage Data
07 (U)	Activate Emg Credit	16 (S)	Battery Usage Old
08 (A)	Top-Up Code	17 (S)	Clear Tamper
09 (A)	Event Log	18 (S)	Quit Service Mode

Manual Scroll Sequence Windows

Move between windows using button B to go to the next window and button A to go back to the previous window. The selected window will remain active for 2 minutes then return to the automatic scroll sequence.

01 (U)	Payment Mode	18 (U)	Time-based debt 1 & 2
02 (A)		19 (U)	
03 (A)	TOU (Time-of-use)	20 (U)	Time-based debt recovery rate 1 & 2
04 (A)	Register matrix 1-4	21 (U)	
05 (A)		22 (U)	Payment Debt %
06 (A)		23 (U)	Accumulated Debt
07 (A)	Tariff Block Counter	24 (U)	MPRN
08 (A)	Matrix 1-4	25 (A)	Local Time
09 (A)		26 (A)	Local Date
10 (A)	Consumption (Vb)	27 (U)	Standing Charge
11 (U)	Balance	28 (A)	Contact Details
12 (U)	Debt to Clear	29 (U)	Active Tariff Price
13 (U)	Customer Ident No.	30 (S)	RSSI
14 (U)	Emg Credit Avail.	31 (S)	Link Quality
15 (U)	Non-disablement	32 (A)	Core FW Version
16 (U)	Emg Credit Balance	33 (A)	Application FW Ver
17 (U)	Low Credit Status	34 (A)	ZigBee FW Version